



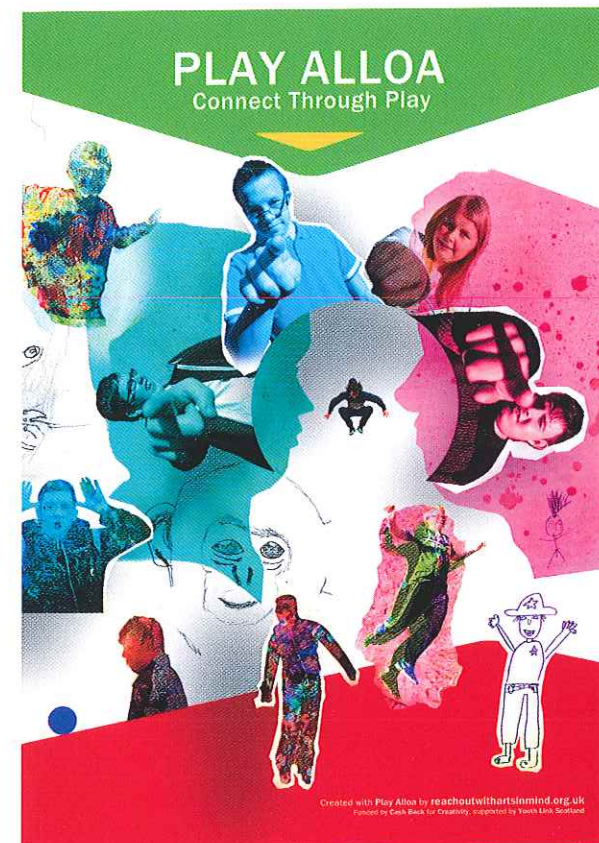
Sessions

Day/Session	Hours
Monday	
Wee Play Alloa	Weekly 10am-12pm
Adult Support Group	Weekly 7pm - 9pm
Tuesday	
Active Lifeskills Group (Ladies)	Weekly 10am - 2pm
Youth Club (Hillfoots)	Weekly 6.30pm-8.30pm
Wednesday	
Active Lifeskills Group (Mixed)	Weekly 10am-2pm
Befriending Activities Group	Weekly Time Varies
Thursday	
Active Lifeskills Group (Men)	Weekly 10pm - 2pm
Youth Club (Alloa)	Weekly 6.30pm-8.30pm
Friday	
Clacks Families Parent/Carer Coffee and Chat	Monthly 10am-12pm
Saturday	
Play Session (Hillfoots)	10am - 12.30pm
Play Session (Alloa)	10.30am - 1.30pm

Play Alloa
19 Broad Street,
Alloa
Clacks,
FK10 1AN

Tel: (01259) 721511
Email: connect@playalloa.co.uk
Website: www.playalloa.co.uk

Play Alloa



Annual Review 2015-2016

SCO23344
Co No: 379003

Board of Directors and Staff

Board Members:

Bob Davis: Chairperson
Richard Teed: Finance
Eileen McMurdo: Quality Assurance
Tracey McDermid: Quality Assurance
Jim Taylor: Autism Consultant

Project Staff:

Maria Malcolm: Project Manager
Lorna Fraser: Development Officer
Leanne Cook: Finance Administrator
Kathryn Auld: Clerical Officer
Tracy Martin: Cleaner

Session Co-ordinators:

Richard Cook
Sarah Metcalf
Angela Ritchie

Sessional Staff:

Rebecca Bridgeman
Kayleigh Clouston
Leanne Davidson
Heather Duncan
Stacey Fielding
Elaine Graham
Kamila Mazurek
Lorna McCall
Sheila McCall
Danielle McGinn
Lisa McGowan
Shannon Murray
Nicki Mylchreest
Rachel Wright
Jennifer Stolarek
Susan Wallace
Laura Willocks
Hayley Bunyan
Tamara Rybak
Emma Walker
Emma Gibson (left 31/08/15)
Stephanie Jones (left 13/02/16)
Kelly-Ann Taylor (left 13/02/16)

Chairman, Bob Davis

As Chairman of Play Alloa, as well as a parent using its services, I would like to start by congratulating the Play Alloa team for all their hard work, enthusiasm and professionalism over the past 20 years but particularly over the past year. The developments that have taken place have been incredible and the vision we had many years ago has certainly come to fruition, thanks to Maria and her talented team, who never forget who they are here to support.

For me the year was not only focused on the remarkable developments and renovations to the main building, base and garden but also the development of the Games Room. I would personally like to send my heartfelt thanks to all of the contractors who supported this build. The process was quite moving and to see how the companies all worked together for the benefit of Play Alloa, donating their specialist service/materials, was inspirational. We will never forget their generosity and positivity.

Our base in Broad Street has provided us with the space and facilities to develop a truly special centre which provides not only the facilities to develop services for children and adults with disabilities but also allows us to play an intrinsic part of the local community.

We often say we feel like a family. Well I have faith in that family and I am confident that we will continue this journey to provide the 'centre of excellence' we are all aiming for.

Project Manager, Maria Malcolm

"Only one word can sum up the past year for Play Alloa .. transformation !

This was the year that saw us transform into an organisation with the huge potential that only being based in our own premises could bring. And what premises they were ! The move took place at the end of June/beginning of July and within weeks we had initiated the renovations that would transform the three flats at the back of the building into one large base. Whilst the builders worked on the inside the building, we worked on the garden and the transformation here was also incredible. By August we were ready to welcome children and adults into the building and the move went without a hitch. Our service users seemed to instantly feel at home. In October, we continued with the transformation and started work on the incredible process that was the building of our games room. Built with the donations of over 15 incredible companies, the games room was ready by November and has been a tremendous success.

In January 2016, we welcomed the Care Inspectorate to our service and received a fantastic report which described us as a 'warm, welcoming and inclusive service where children are respected, listened to and valued.' The report continued by stating that we "provide a high standard of care and support in line with stated aims and objectives." We are convinced that with the support of our wonderful families, fantastic children and adults, our dedicated staff and simply brilliant volunteers Play Alloa will undoubtedly move forward stronger and more able to provide the range of services our families deserve."

