



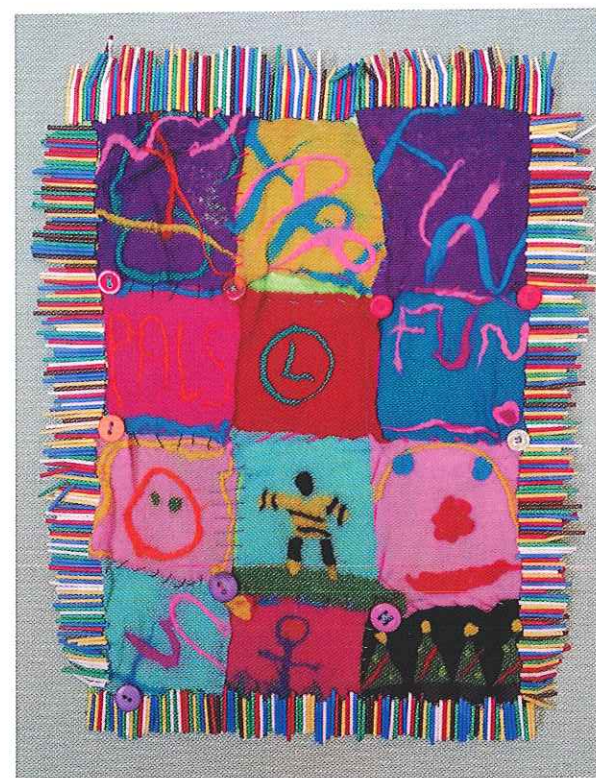
## Sessions

Day/Session	Hours
<b>Monday</b>	
Wee Play Alloa	Weekly 10am-12pm
Adult Support Group	Weekly 7pm - 9pm
<b>Tuesday</b>	
Active Lifeskills Group (Ladies)	Weekly 10am - 2pm
Youth Club (Hillfoots)	Weekly 6.30pm-8.30pm
<b>Wednesday</b>	
Active Lifeskills Group (Mixed)	Weekly 10am-2pm
Befriending Activities Group	Fortnightly Time Varies
<b>Thursday</b>	
Active Lifeskills Group (Men)	Weekly 10pm - 2pm
Youth Club (Alloa)	Weekly 6.30pm-8.30pm
<b>Friday</b>	
Clacks Families Parent/Carer Coffee and Chat	Monthly 10am-12pm
<b>Saturday</b>	
Play Session (Hillfoots)	10am - 12.30pm
Play Session (Alloa)	10.30am - 1.30pm

Play Alloa  
19 Broad Street,  
Alloa  
Clacks,  
FK10 1AN

Tel: (01259) 721511  
Email: [connect@playalloa.co.uk](mailto:connect@playalloa.co.uk)  
Website: [www.playalloa.co.uk](http://www.playalloa.co.uk)

## Play Alloa



## Annual Review 2014-2015

SCO23344  
Co No: 379003

## Board of Directors and Staff

## Chairman, Bob Davis

## Project Manager, Maria Malcolm

### Board Members:

**Bob Davis:** Chairperson  
**Richard Teed:** Finance  
**Shaun Murphy:** IT/Sports (resigned 16/2/15)  
**Eileen McMurdo:** Policies/Procedures  
**Angela Beardsley:** Networking  
**Tracey McDermid:** Director (appointed 23/3/15)  
**Jim Taylor:** Director (appointed 16/7/15)

### Project Staff:

**Maria Malcolm:** Project Manager  
**Rebecca McFarlane:** Development Officer (left 31/12/14)  
**Leanne Cook:** Administrator  
**Kathryn Auld:** Clerical Officer  
**Tracy Martin:** Cleaner

### Care Staff:

**Sarah Anderson**  
**Hayley Bunyan**  
**Richard Cook**  
**Leanne Davidson**  
**Heather Duncan**  
**Stacey Fielding**  
**Emma Gibson**  
**Stephanie Jones**  
**Lorna McCall**  
**Sheila McCall**  
**Danielle McGinn**  
**Sarah Metcalf**  
**Nicki Mylchreest**  
**Angela Ritchie**  
**Kelly-Ann Taylor**  
**Emma Walker**  
**Susan Wallace**  
**Laura Willocks**

**Paula Carnegie** (left 14/9/14)  
**Jillian Murphy** (left 30/8/14)  
**Natalie Paterson** (left 26/9/14)

I would like to start by reiterating our thanks to the marvelous Play Alloa team, from the parents, children and young people who attend our groups.

Last year I said that my vision for the future was to create a "centre of excellence for children and adults with disabilities and additional support needs".

Well just look at what we have now – we have a new home for the 'centre of excellence' that we always dreamed of ... led expertly by Maria and her excellent team ...

I would like to just reflect back on the achievement of creating our wonderful new facility and the work of all the many that have contributed to making it happen. We worked together to create a centre that we should all be extremely proud of and it has made us all the stronger as a 'go to' centre that's clearly visible to all in the heart of the community.

We continue to grow year on year & Play Alloa is now supporting over 140 families, a huge increase from this time last year.

So as Parents of very special Children and Youngsters lets continue to say 'Play Alloa is simply the best'.

What an exciting year for Play Alloa ! Our Annual Evaluation which was completed by Rebecca McFarlane (assisted by the employment of an Intern from Stirling University) resulted in a comprehensive positive assessment of our services and activities from the perspective of parents/ carers and service users. Our range of sessions developed to include a weekly toddler group (Wee Play Alloa), a weekly adult social group, 3 x weekly adult life skills day sessions, 2 x weekly youth clubs, summer school holiday Play Schemes, family trips, a fortnightly peer-volunteer led befriending group, monthly parent information sessions and support group and a number of individualised support sessions. It was a reasonably successful year for donations and grant funding, however, funding is always difficult, it's tough times! But we continue to work hard seeking new funding awards which can support our work. local fundraising becomes even more important and we thank everyone who has helped us raise our core funds this past year. After some uncertainties regarding accommodation, we spent many hours working on the possibility of Play Alloa moving to a more secure building with the room to grow and expand. We were delighted to be shown the Broad Street building in around November 2014. There was much work done behind the scenes and eventually a new 5 year lease was drawn up from the beginning of June 2015.

The potential for the future is great and with the support of our wonderful families, fantastic children and adults, our dedicated staff and simply brilliant volunteers Play Alloa will undoubtedly move forward stronger and more able to provide the range of service our families deserve."

